



Josper Roaster RT01

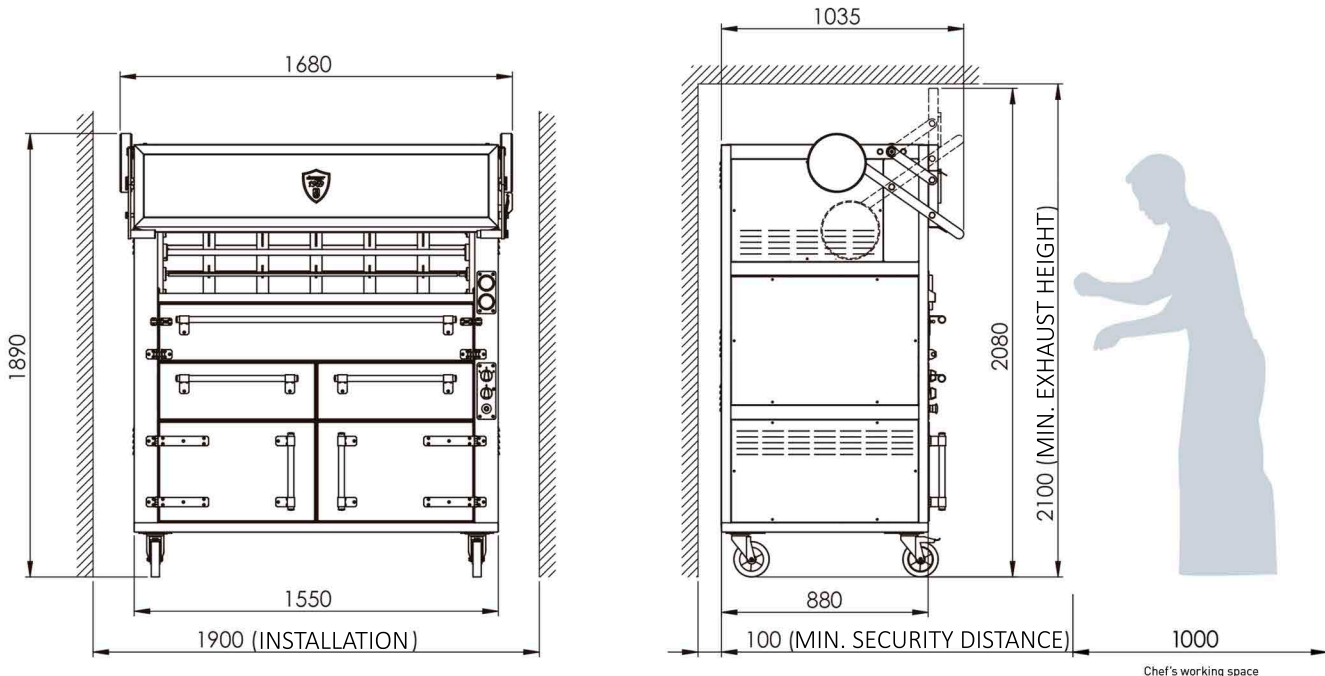
INCLUDED ACCESSORIES

- Smoke outlet vent
- Charcoal grates
- Josper tongs
- Bristle brush
- Poker
- Ash hatch and handle
- Ash pan

OPTIONAL ACCESSORIES

- Cookware⁴

TECHNICAL DRAWINGS



TECHNICAL INFORMATION

Maximum average cooking capacity	48 chickens (8 x 6 swords)
Fire up time ¹	35 min. average
Cooking temperature	200 - 280 °C
Maximum charcoal load	20 Kg
Medium charcoal intake	20 - 25 Kg / 180- 200 chickens
Drawers' controlled temperature	80°C
Drawers' capacity	4 G/N trays 1/1 (32 chickens average)
Electrical connection	Monophasic 220V / 50Hz
Electrical power	0,45 Kw
Exhaust rate ³	4000 m ³ /h

INSTALLATION

Minimum installation size	1900mm [width] x 1200mm [depth]
Minimum installation height	2100mm

BUNDLES: SIZES AND WEIGHTS

Sizes bundle	1800 x 1200 x 2100 mm
Gross weight bundle	850 kg

- 1 Please, check our document titled "Fire up and use of the Josper oven".
- 2 Please, check our "Cookbook".
- 3 Please, check our document titled "Installation advices of the Josper oven".
- 4 Please, see our wide range of cookware in our website: www.josper.es
Ovens' sizes and weights are to be considered with the standard accessories and packing.

i A continual improvement process may require us to change specifications without any notice. Revised June 2012.